



SSOY

Delivers Solutions

U.S. Soy: An Illinois Perspective

Doug Winter

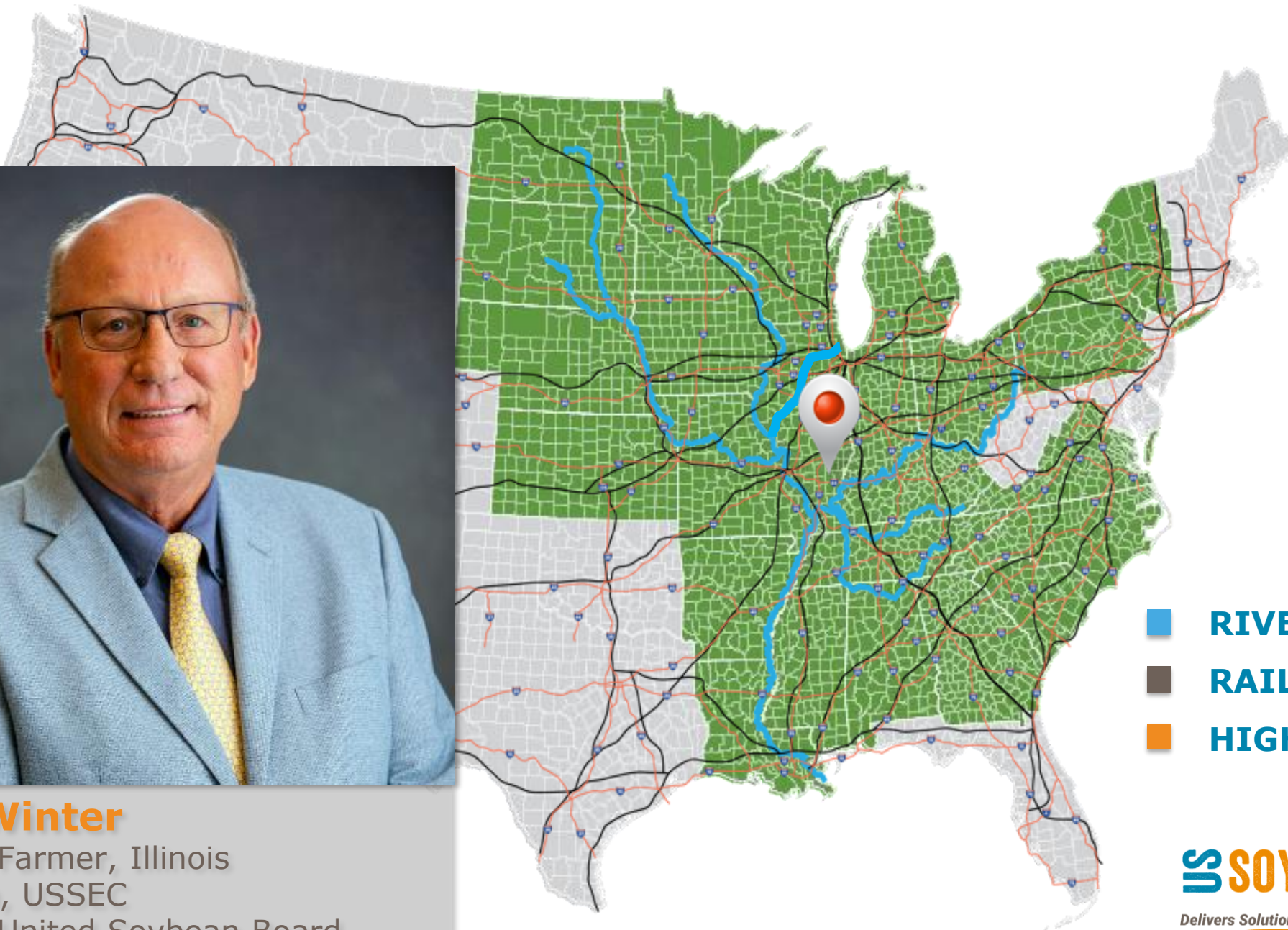
Chairman

U.S. Soybean Export Council



Doug Winter

U.S. Soy Farmer, Illinois
Chairman, USSEC
Director, United Soybean Board



-  RIVER
-  RAIL
-  HIGHWAYS



My Family Farm

- 5th Generation Family Farmer
- Great-great grandfather started farming in 1869
- Grow commercial seed soybean, commodity soybean, white and yellow corn on 3,520 acres (approx. 1,425 hectares)
- Crop Ratio: 60% soybean, 40% corn





Sustainability & Technology



COVER CROPS | CROP ROTATION | CROP SCOUTING | VARIABLE RATE TECHNOLOGY | VARIABLE RATE SEEDING | GPS MAPPING





2022 Growing Season

- Excess rain delayed planting
- Steady growing season with good growing conditions
- Continuing a maintenance program to decrease input costs – reduce or eliminate extra applications
- Using more intense crop scouting programs to control herbicide and pesticide costs
- Experimenting with variable rate seeding and prescription planting
- More no-tilling to reduce fuel costs

2022 Marketing Plans

- Contract commercial seed soybean
- Forward contract commodity beans
- On-farm storage: 250,000 bu.
- Soybean markets: most of soybeans go through Consolidated Grain and Barge crush plant, river terminal elevators occasionally bid
- Corn markets: between river bids and ethanol plant
- Next year planning a 50-50 split between corn and soybeans

The logo for US SOY, featuring a stylized 'S' symbol followed by the letters 'SOY' in a bold, sans-serif font.

Delivers Solutions

A large, close-up photograph of yellow soybeans filling the left and top portions of the frame. The beans are arranged in a dense, repeating pattern, with their characteristic oval shape and small hilum clearly visible. The background is a solid dark blue, which contrasts with the bright yellow of the soybeans.

Thank You

USSEC.ORG



USSOY.ORG

